

Mr. J. T. Tuff, pres. of Grants Pass
1st Nat. Bank, says there were many
bunches of chokecherries along Rogue
River & elsewhere, but there was
especially one great bunch of
chokecherries just down river
of the old fellow - Masonic cemetery,
which cemetery is 2 miles due
east from the center of Grants Pass,
near the ~~to~~ north bank of
Rogue River, & on the old
E. Wilamette - California road, which
ran up along the north bank of
Rogue River from Grants Pass to
Rogue River town.

Lakwan mahayyu wota, plan
on Regue River above confluence of
Applegate Cr.
From Lakwan, ch. 100 miles.

kelya.lkh, plon. sup knew an old
 woman from there. kelya.la', gent.
 This place is on Rogue River, I cannot
 understand if it is ~~in~~ or near of Grants
 Pass. She says app. that it is near
 lakwanmahay yuwota'. Grants Pass
 is outside Rogue River, like from Coosden
 to Siletz, but the boys ran it on foot
 & in no time came back.

Rhg. at at G. Pass or between P.R. bridge:

lakwanmahay yuwota', ng. big choke cherries ^{ta},
 a place on the north bank of Rogue River, in front of
 tenc'hawan. Both trees gave this the same.

~~that~~ All she knows is that both kelyak
 & lakwan... are on n. bank of R. River, & that
 lakwan is in front of tenc'hawan, & n. of kelyak is upriver
 or downstream of lakwan. ^{2 of} ~~the~~ women, sisters of each other, named
 kelya.la', died at Grand Round.

ya.l, white fir, a tall tree has big tassels that
 hang down. None of this tree grows at Siletz. Has tassels
 6" long, they peel off the ~~outer~~ outer bark & eat the meat-
 bark (= the bast), George, bearing her description, says she may
 white pine, eat bast in the spg. It looks like fir. Lots
 grew around Grants Pass. Hence plon. kelya.lkh.

Xan'wats⁷ i'sta, a place
where there is a high bank on n.
edge Rogue River, in front of
teme'huwan somewhere, and near to
Kielya~~g~~.rkh all rd. Also spoke of it as
a place up Rogue River. A new
glen, recalled at glendale, on our
way to Coos Bay.

Plans way down Rogue River

Wally Ostrom had a husband from
Crescent City.

Molly Abraham Tom's cousin is Molly's
1st cousin. Abraham Tom lives up the road
from Molly's house

Th. x i k a ^{ch former} man, Gallice Ch. ~~Blk~~
 (gallic's kriik). x i k a man's
 Gallice Ch. Indians, they killed
 a whiteman named Pickett there where
 he was digging gold. They talked
 like Salchuck, but some talk
 Tak. language. Geo. Baker says
 loc. pronunc. is gallic's. France's
 cousin's father talked x i k a man's language.

Mr. Crow. We had an uncle
 killed at mouth of Gallice Ch used to
 be a buried graveyard 1 mile below the
 mouth of Gallice Ch. or Rogue River. There is
 a tiny town and postoffice at the mouth of
 Gallice Ch.

Frances:
~~Blk~~ 055 Reg. Riv. ferry was at Coy Evans place
 used to cross them to ~~Blk~~ go to Col. & Jackson side.
 Frances: tal is a little ch., n. 116. of RR,
 riding of ~~Blk~~ Gallice
 Molly ^{present} is 50 yrs sick, can
 scarcely walk.

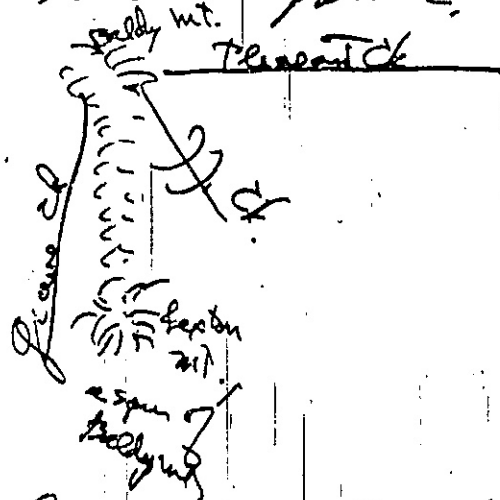
the Tapox[#]tan, from poxtan,
salt, name of a nice field on
north edge of Rogue River,
downriver from mouth of Galice Ck.
The Canyonville chief put his camp at
tapoxtan in war times. Says most
clear & satisfactory info. that
tapoxtan, twice wd., is down Rogue
River from mouth of Galice Ck.
She has seen tapoxtan & Galice
Ck., but has never seen the great
falls, but her mother told her
(evidently erroneously) that the falls
are upriver of Galice Ck. mouth.
Molly n.

Pls. : each cgl. lower than preceding.
 a - hard to see, hardly - mi.
 Takitkamiyukh, a portage of
 canoes, & big waterfall, way down
 just like Eng. made

Rogue River Inf. never was there.
 Her mother told about it all the time
 a boat was lost there. You must
 never go above that fall, you might fall in.
 takitkamiyukh, gentle
 molly n.

Mr. Crow: So. lower falls of
 Rogue River, 5 miles below the mouth
 of Grave Ct.

Mr. Crow: J.J. head, against Baldy
 Mt. & so does Grave Ct.



So Baldy Mt. Hummerly is the mt. she
 says. Can see Baldy from Crow's?

mouth of lobster of the Kings. come over the
way from the north side of Rogue River & across the river.

Map Graham p. 216

high level
ascendless
Phy tanthi. Tha, the place that
the treaty was made at the
end of the Rogue River Indian
From there they walked one
day's ~~long~~ walk to reach Port
Orford.

Mr. George Baker says old Indian
trail ^{went where the Gov. fire trail runs now.} leaves where Agnes is now, 90
across Iron Mt., passes n. of Lobster
Ck., n. of Yuki Ck., & s. of Elk River. Follows this
divide to Panther Mt.

Can see the ocean nowhere on Lobster Ck.
or on Yuki Ck. The only places where one
can see the ocean on this trail is from
Iron Mt. and Iron Peak (a high mt. entirely
from Iron Mt.), and from there

Came out ~~west~~ on Hubbard Ck. (the ck.
s. of Port Orford).

The treaty ~~was made~~ was made at
tanthi. Tha, a field on Rogue River. That was where
they had the last big fight & where they made the treaty.

Map. Wood for silverside is on slope of
Mr. Baker says he thinks is the flat on n. side of Rogue River at

Bagnell Ferry (only 4 1/2 m. from mouth of Rogue River) - On it 2000 s. s. m. m.

meadows: The treaty was made
at Big Meadows, way way bounding
lower falls. Chief John came out
of ~~the~~ on those meadows & shot away
what ammunition he had & surrendered
Big Meadows is way up on the mt. almost
on the divide betw. ~~Yampa & Royal~~
the Coquella & Royal River, not on
Royal River. Also they fought & surrendered
that is as. tawki. ta. Big Meadows
is 10 miles upriver of Agnes. The
shortest way to get in there is to go
from Powers over the 9th trail.

Frances: We are m. 226
from, she is.

Tak. 6. Plans around Table Rock.

t; tanakh, Table Rock.

↑ long, not short, ch. forever

This is the name for the top of
Table Rock, for the whole
rock of Table Rock. means

on top of the rock. From
tan, rock. Only the side

towards the river is like
a table — the north side is

just like a big continuous
stretch of land — with no cliff.

The former Fort Lane was
just across Rogue River from
Table Rock, on the S. side of
Rogue River. A historical society
has put a bronze tablet on the
site recently.

Tats'ipe^{the} Kwan'eh
ch. for good. ^{Travel} from Tats'ipe^{to} Kur,
grasshopper. There is no water
at the place. It is about 2
miles from Table Rock, on the
south side of Rogue River,
whereas Table Rock is on the
north side. A plain. No hill
there.

haya wakh a place
where there are lots of wild
plums, on south edge of
Rogue River across river from
Table Rock. From yawit, rib.
maybe somebody ^{was} fishing and pulled
some dead ~~a~~ man's ribs out of the
river there and did not know whose
ribs they were, & hence they called
the place for the ribs. pi. 'ikh,
wild plums. ~~There were~~ there
were two kinds, red and white.
They were large and sweet. Called
as apples by the same word.

lats[#]upkh, a place
 s. of Rogue River across from
 Table Rock. Lots of ~~all~~ neykh
 grows there, a kind of
 Camass resembling carrots, ~~there~~
 not color. But ~~psulm~~ is a kind of
 camass that are real red ~~table rock~~

Rogue River

- Table Rock
- kayawakh, wild plums by river.
- tatsipekwankh
- lats[#]upkh

It is an open place, no
 timber & no mt. Can give no
 etym. At latsupkh many
 kinds of camass grow where the
 spring wets the ground. Thinks
 the whiteman has never plowed
 there. It beats every other place
 for Indian grub.

saithkawh^{#1}, a big
open place on south side of
Rogue River opposite across
Rogue River from Table Rock.

tik³arawikh
Jacksonville side

saithkawh

laptsup[#]dh
(spring & camp)

~~these~~
The above 3 places ~~are~~
adjoin one another. Says
saithkawh means open
place, no hills or nothing.

Mary Eagan was from the
place ha-ne-sakh. She was
hane-sway weyth waywe-th,
↑ ch ↑ tank? ↑
woman (does not mean girl). No etym.

Rhg. says ha-ne-sakh is a little
creek that comes from the north, while
Butte ck. comes from east and there are
only these 2 cks. The end of Rogue River, where
these 2 cks. enter it, is ha'o-phakh. Grasshopper plain. adjoins it.

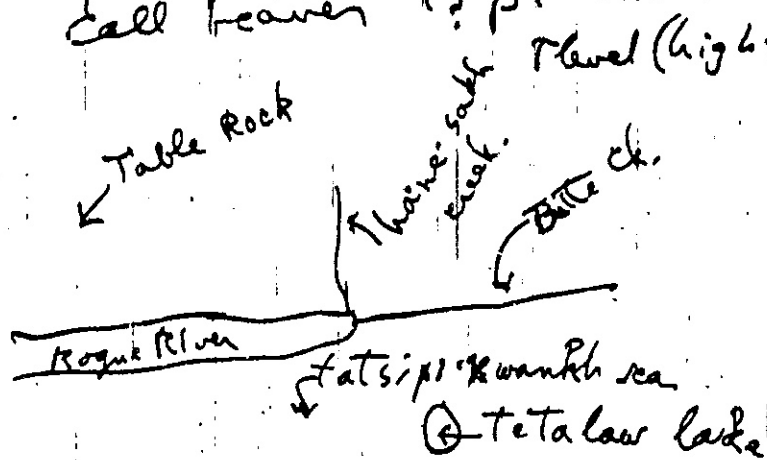
Mary Eagan was both Frances'
relative and Molly's relative. Mary Eagan was the
one who taught Mrs. Evelyn Baker how to talk jargon.

Table Rock is the upper end of
Rogue River. East or north of Table Rock there is no more
river, there is just a little creek called hane-sakh
is a little ck. or up a little ck. that comes to
Table Rock from the north while Butte ck. comes to
Table Rock from the east. All w. & splendid they
said that Mary Eagan's country was hane-sakh up that
creek that comes in from the north, & that these six waterfalls up that creek.

Mary Eagan said: 10. 15 xwanaps,
little, = haly's dialect T's o's i. t =

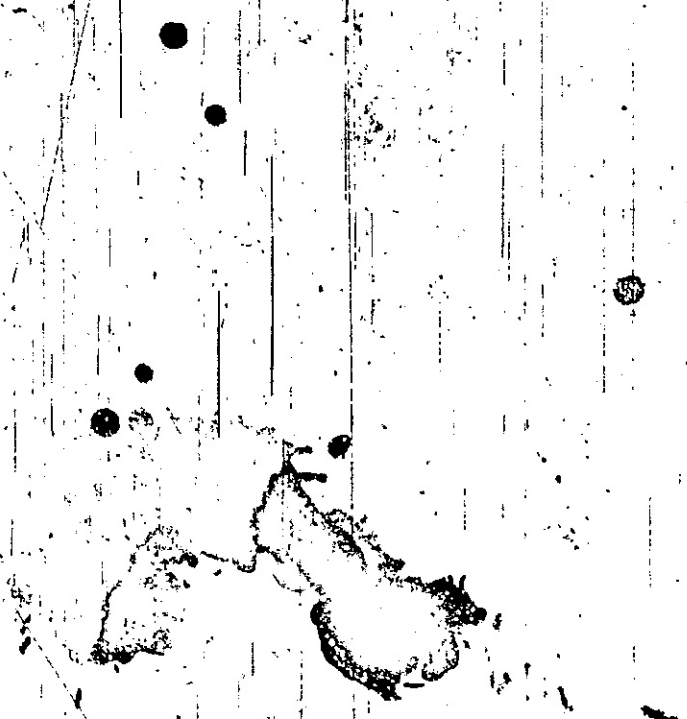
Frances dialect T's o's i. t = The
hane-sakh dialect that she spoke is different from the
dialects that Molly or Frances talk.
called waterfall Ti-tiakh - funny talk

Moly: there used to be
 a big lake east of Table
 Rock. It is called [#]tetalaw
 mg. poison lake, dudcan poison.
 Once Moly saw an old woman
 beaver swimming in this lake with
 2 baby beavers, one on each
 shoulder. This lake is adjacent
 to the flat called from grasshopper
 call beaver tsipinkh
 level (high)



Knows Sam's valley,
by air name, but never heard
the ind. name of it. Government
told Joe that after 40 yrs. ind.
we come back & make an ind.
town behind that Table Rock
(~~at~~ Sam's valley), & no longer be
scattered all over - make a
town. The government told
Joe this through Jacksonville,
Jacksonville was then the
county seat, & was only town
near here.

Illinois River plans.



Ti-wi-kh, the waterfall in
Illinois River, at the place
called Talsalan.

Phg. only name went there with
her brother & ~~got~~ ^{buy} dry salmon, in the spring
time. Geo. Luf. has never been there. Geo. Baker
says this is surely the Anderson place waterfall
on Illinois river where Luf. used to catch
salmon. Wagon road goes from Selma
to Anderson's place, or 6 miles further, to
Oak Flat & Panther Bar.



Molly n. Ti-wi-kh. Gentl.
Ti-wi-ga. ⁶⁰ Lys. almost level. From
Ti-w, waterfall. Molly n. Tawaxki.

Ph. ^{carefully reheard} ~~hathkaipüsiita~~ ^{hathkaipüsiita}, Illinois
River. Name of the Illinois River.
Ned Evans' bro. in-law, if living
today, cd. me Illinois River plans.
It is below talsalsan. Both
these places are on the Illinois
River, not on the Rogue River. Jimmy
Batis' father is hathkaipüsiita.

Phy. talsalsan is upriver,
hathkaipüsiita is downriver, not
very far downriver from talsalsan.

Jimmy Batis' father & belonged to
hathkaipüsiita (gent. hathkaipüsiita)
(Ch. forever + ventrals).

Geo. Baker says that Raucheria
Creek comes into Illinois River from the
west halfway between the upper
fall & the lower fall of Illinois
River. You can see the upper falls
from Raucheria Ck., & Geo. did not see the
lower fall, but it is not far below. Geo.
supposes the best fall is the lower one.

|| Ti-wi-wi falls at the place called Talsalsan

Talsalsan in the
word to go there to
jumble & play gambler.

hatapisi: i.ta
is down the falls
river from Talsalsan
kaltath = crest
the room. call
the crest city
falls. kildata.

empt of the word
river falls.

Rhy. Talsalsan and
two: it is the same
place - there is a
by local time
Talsalsan

Talsalsan, the place where

the ferry boat goes across Rogue River.

Mr. Crow: the old Vanoy Ferry
2 miles down front Rogue River from
Grant's Pass. that was the only ferry in
the country in those days in the lower
Rogue. In the river higher up there were
other ferries, but the Vanoy Ferry was the only
one left.

Massie's ferry is another ferry.
Massie's son is a man 50 yrs. old, working
as cook at the CCC camp at Alameda.

Rhy. Talsalsan = Illinois river.
Talsalsan is a falls in Illinois river once
Fi's water went down there & he
brought dried salmon from the lands. who went
down there. No ferry there. Rogue River water in
winter was high & no falls & no good for
salmon fishing, so went to buy salmon there.
had no ~~good~~ need raft of logs built together with large cutters
Five fallen ones caught 300 salmon in one
night, at Talsalsan falls way down Grant Ch.,
& he divided them among the kids.

Rhy. Talsalsan is not a falls.
It is a jumble of Tals' father's place.
Talsalsan

dog, Talsalsan, none of a
place way down Illinois road.

Frances' mother saw a ~~the~~
shinney game there, it is by a
big fall. ~~the~~ the Talsalsan's

chief saw his mother with
her bro. ~~promised to buy~~
her so remarked: that Tak.

wife chief has a ~~young~~ young
wife, "No, that is his sister,"
but then at once the Talsalsan's

chief ~~was~~ ~~to~~ ~~buy~~ my mother
from ~~with~~ her bro. — and he
was an old man already. That is
the way it is, so.

Molly n. Talsalsan.

Plans. near Grants Pass Town.

ha'kamsi, a place, forgets
whether this side of Grants Pass or the
other side. ~~After~~ ~~an~~ aunt's husband,
Tyler Joe, bought the first horse that
we ever had, got it from California.
This horse got shot in Ind. wars, &
was abandoned & died at ha'kamsi.

It is a place very close to Grants
Pass. Is inclined to think it is where
the little hill is just S. of Grants Pass.

Rhg. ~~the~~ ha'kamsi is on the
side of J. J. ck, betw. J. J. ck & Grants Pass.
Th. ag. ha'kamsi. No stym. used to dig
lots of camass there: Tip, camass.
level long

[x in mt. mahogany - ~~very~~ ~~big~~
sticks of it.]

Roy Downey, Siletz, Oregon.

Waggoner's place is on a little creek
at the upper side of Waggoner's place, this was
an open place at the foot of a little hill. At
this open place the sleds. freight. Waggoner's
place - ti-talam. The big open place =
tame'hawam. There is a ~~big~~ trail between
Waggoner's place & tame'hawam. Both are on
the n. ~~side~~ of Rogue River.

Ph. rhg ts'i-saxinth, 3 nights. We stayed
3 nights at ti-talam. possibly
ti-talam. At least the m is like
a separate syllable with rising or higher
pitch. No etym.

ha'loemsi is between tip 'stishta
and goats Pass trail. Ind. trail & old
St. Wilmet road pass ha'loemsi, a
trail that goes up Rogue River also passes
there.

Talhuwi, a big field

pretty near Rogue River distr. Frances
in rapid enumeration of plons. & notes s. along of her. ^{mentioning}
mentioned this place after sal waxham
and before she mentioned tip³olt³ilta

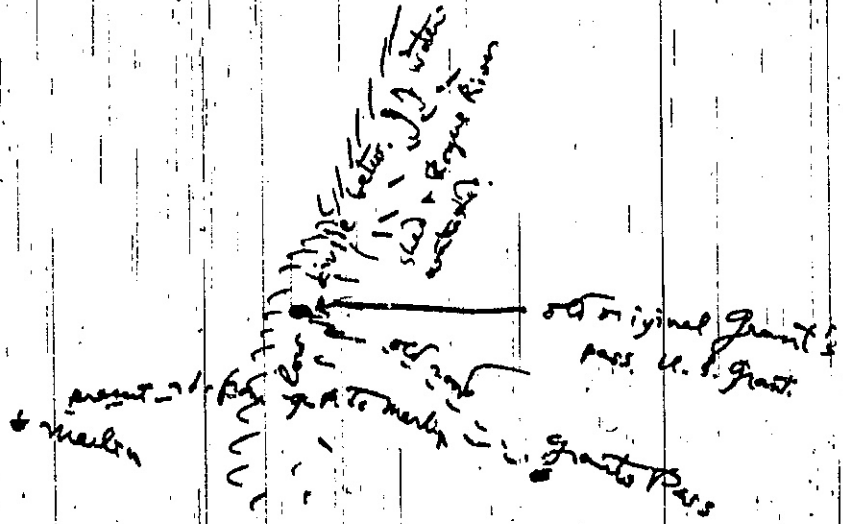
Rhd. talhuwi: on asking her again
Etym. they pounded little seeds like ~~flowers~~ flour.
- seems to confuse it with tak. alaksi.

tak^E-alaksi point at
Pumpkins ranch.

Fr. Nov. 2 rhg. ~~vs~~; ha'loemsi
is ~~near~~ south of ha'loemsi creek, and
Talhuwi is a second clearing or place
just "below" ha'loemsi, ~~she~~ remembers that at
talhuwi a woman & her little boy, or at least
a woman & a boy, Frances was not an eye witness,
but just heard this, & supposes the Shasta Indians did
it. Since Miss Savage said that a woman and
a little girl were killed at the Buck ranch, on
old Cal. hwy. just a little s. of Pleasant Valley cemetery,
it must be that talhuwi is the Buck ranch.

Mi. Crow. The old original Grant

Pass



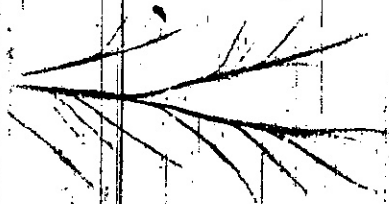
The soldiers were camped there, & the Grant & others were playing poker, & he seemed an odd character while he passed up his horse in this game.

Jumpoff Joe - had some scouts out & kids were chasing the man. There was a ^{white} scout named Joe. The other scouts hollered to him: Jumpoff Joe, & he did the jump of this thing & made his getaway - they were some scouts that U.S. Grant had out.

Ti. Ta. Lam, ~~Handwritten scribble~~

= grants pass down, where we are
sitting as we write these notes.

ti. ta cam, goats pass slow.



0534

Temehawan, a place the other
side of the little hill. A place
close to Grant's Pass.

Tells story of Temehawana,
nephew of Frances' brother's father in
law.

temehawän, ~~the~~ place,
A man named from this place ~~had~~
a Shasta woman ~~named~~ named
teme'huwana', people called him
a chief. He had a Shasta wife.
Teme'huwana' died at Grand Round.

Terme' hawān, big place just
s. of Grants Pass where Indians used to dig
camass. Has never been there but
her mother talked about it.

Rhg. Terme' hawān, big place s.
of Grants Pass where Indians used to dig
camass every spring.

Rhg. Terme' hawān, a big field
on the other side of a little mt.

Tak. 3.

S. Fork Umpqua to Smith Ranch Incl.

F₂ te. kan

[F₂ powdered hot water on
acorns twice to leech them.]

F₂ kwentat, mg. neck. Same account as
te. kan. Mg. neck.

F₁ yaipap³hsy³uwo³. Ta³, mg. tall white pines.

F₂ mg. yaipap³hsy³uwo³. Ta³, mg. long pine trees below.

F₁ ha. kwalkh, mg. wood tree.

Chase. Peel
the outer bark
off & eat part
a spg time, sweet
like sugar, men
folks hunt it &
peel it off.

F₂ hath kumkh, mg. iron.

F₁ haxiwkh, from xiw, digging stick.

F₂ takhts'asin, Grave Ch.

F₁. tith k'aw

F₁. ta k'weksaman, Hungry Hill

F₁. yukhyath k'wan, salt deposit up Gave Ch.

F₁. p'arsewe.ntha = Tisewe.ntha

F₁. p'altiw, from t'iw, waterfall.

Fr. Tan murath.tha, get wood for
maple.

Fr. haswi.kh, Cas. Ch. cave, mg. navel.

Fr. John Kitchen, white man, his bro. was named
Jim Kitchen, lived a little below haswi.kh.

Fr. hap^opha, mg. alder, distr. of haswi.kh.

Fr. Tikili^oxa, a place, mg. bank, just a little
below hap^opha. A woman named Tikili^oxa^o died at Gr. Road.
Fr. hak welsaman, from k'wels, pine roots.

Fr. Tugo.m.kh, on Umpqua river

Fr. Tak-pults^o.lta, mt. by hap^opha.
From 'altham, black.

Klamath River region plans.

keltat, place way down
somewhere the other side of Jacksonville.
Never was there. ~~to~~

Plg. keltat is a place by
Crescent City - in another country,
not at in Rogue River region.

Molly went to Kihibat a
s. of there in potato time. She was at
mouth of Klamath. Molly in Ke. l. path
Triab Long.

Francis Aug. thinks Lamhi kh,
is Illinois side, upper side. (wd this
mean they are possibly the Karuk?).

Molly ~~on~~ Lamhi kh ~~is~~
Tried good. ^{short}
Molly has never been to Yoka.

Old John's youngest son was named Rich.
Rich. killed his wife when she was by fire at night & put on their shirts - saying the shirts she had dyed.

Lamhiya, "Klamath place",
above Crescent City. Seems to say the
Rogue River was started there. There is
some Lamhiya blood here at
Siletz - Tzee Joe, ~~now~~ now dead, who
lived at Siletz, was a Lamhiya.
This last was very important. Many Tzee Joe's
her husband died last winter, ~~last~~ ^{last} winter, ~~last~~ ^{last} winter.
Rhg. says Lamhiya is way
down by Ocean. Fr's uncle's
bro. in law got killed at Lamhiya in
a fight somewhere there, maybe
at Illinois, then the talk went round to
make war, and those kids put poison
on the land & the talk is not first
those kids down there, they all ran
away.

Rhg. it is where Calif. kids come
down all the time, maybe Illinois
water went up there, Cal. kids traded
mussels, etc., there.

Fr. old Joe, pasiwais, I he Washington,
were Lamhiya kids.
Old John is a leader that manages tails of
much in telling of Rogue River war.

Frances says old John talked Shasta
language, Molly never heard
lamhi.kh. But Molly knows
positively that the Happy
Camp Indians are called in
muy haws
↑ longish + feeling dipping

Clamath Charlie's mother talked
Shasta, + Clamath Charlie's father
was maybe lamhiya. Molly
knows well that Clamath Charlie
+ others were called lamhiya,
+ n. where the place is. Molly
has been at Happy Camp + saw
a white deer once there. When I
ask what Happy Camp place is
in Ind., says it is muy haws
(Frances repeats it as muy haws kh)
muy haws yapa, the Camp Inds.
Mary Egan called her people
the kankan; Molly also calls them
the kankan, = Frances language winsa.

South Fork Umpqua
Plans. ~~Cherryville~~

to Smith Ranch incl.

Phrd.

List made to Canyonville & Kwentat

To: kanta 'ana'

- divide →
- tekan = Canyonville. O.R.
 - kwentat, at foot of the hill beyond Canyonville. (Ago-lic) at 501 is a flat at foot of hill
 - hakwalk, big field before we cross Cow Cr.
- we follow also ^{to be defined} as ^{is} ^{had} ^{of} ^{row} th ^{at} ^{hw.} ^{ev.} ^{ing} ^{down} ^{n.} ^{the} ^{of} ^{cow} ^{cr.} ^{before} ^{we} ^{crossed} ^{it}
- titkaw down Cow Cr. hat kum = where old road crossed Cow Cr.

← divide

- again
- haxiw at foot of hill. Possibly Woe/C
 - Reck = Tak's 'asin. grave

Ph. rhg:

te. kan almost level pitch in both syls. chief
 No stop. gent. te. kanyu ksa all ta'e. nd.
 kwentat. Says it means neck, & touches
 back of neck ^{to explain}. But poktanx neck,
 ordinary word for neck heard many times.
 The last syls, surely high pitch. gent.

kwentat's.

Té-kanyusa', name of an
African. ~~He~~ From te-kan,
place this side of Kwentat.
Té-kanyusa' had a son, named Jim,
who married ^{up} sister Mary.

Kwentat, at first given as
Canyonville.

A man named Lardi ^{De Liff} lived
at Kwentat when inf. was a girl. ^{a white man, had a wife}
^{was taken in.}

A man named Hall kept a saloon
~~at Kwentat~~ in the flat just N. of
Kathun. @ When I ask if his saloon
was at Hakwaok, says Hakwaok is
the long field all the way from Kathun to
Kwentat.

and merely followed up again
in this equivalence.

h a k w a . l k h t o w C r e e k . l i f ' s
father's cousin belonged there.

h a k w a . l k h , m g .
p h . m g .
cottonwood tree. h a k w a . l a .
h g e t . h a k w a . l a .
real long.